

# CRYSTAL LIFT UP

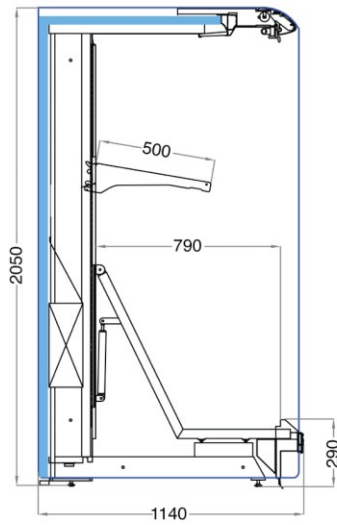


# CRYSTAL LIFT UP



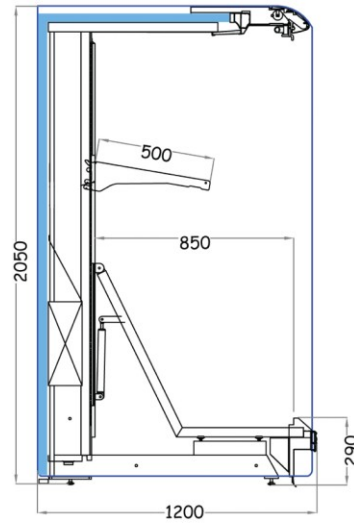
Crystal Lift-up is an ideal unit for display and sale of delicatessen and dairy products. It is amongst the preferred models mostly by discount stores, with its functional front panel system which can be raised by a hydraulic elevator to allow direct merchandising of goods on pallets or carts quickly.





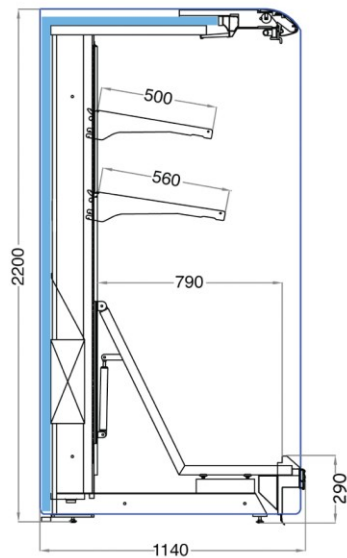
CRYSTAL LIFT UP 2050/115

Length mm	1250	1875	2500	3750
Display Area m <sup>2</sup>	1.61	2.41	3.22	4.82
End Panel Thickness mm	50			



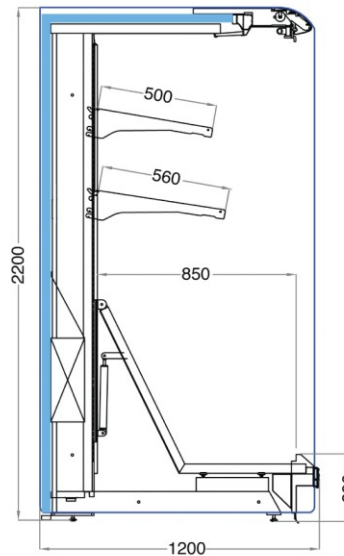
CRYSTAL LIFT UP 2050/120

Length mm	1250	1875	2500	3750
Display Area m <sup>2</sup>	1.69	2.53	3.38	5.06
End Panel Thickness mm	50			



CRYSTAL LIFT UP 2200/115

Length mm	1250	1875	2500	3750
Display Area m <sup>2</sup>	2.31	3.46	4.62	6.92
End Panel Thickness mm	50			



CRYSTAL LIFT UP 2200/120

Length mm	1250	1875	2500	3750
Display Area m <sup>2</sup>	2.39	3.58	4.78	7.16
End Panel Thickness mm	50			

Operating features shown are based on ambient conditions of 25°C temperatures and 60% RH.  
Operatin Voltage : 230 V / 50 Hz